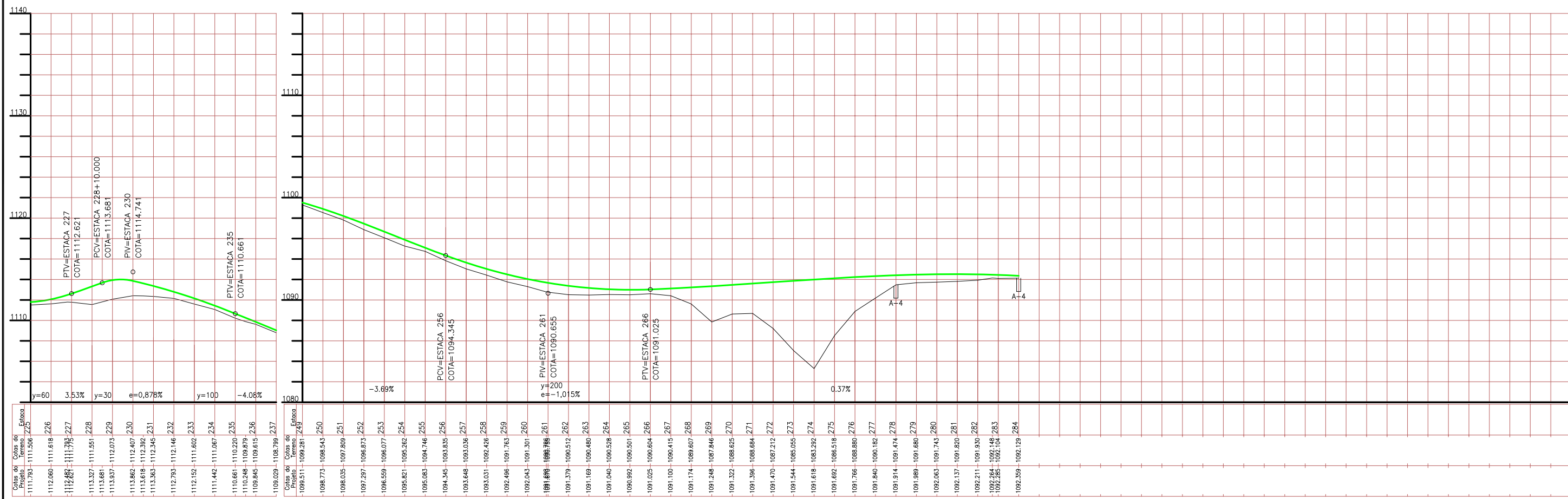


CURVA	AC'	R(m)	LC	T/TS(m)	D(m)	TS - PC	SC	CS	ST - PT
02-LE	32°12'06"	310.000	100.000	139.825	74.226	221+15,896	226+15,896	230+10,122	235+10,122
03-LE	31°13'16"	800.000	—	223.523	435.928	260+18,335	—	—	282+14,263



Estaca	Cotas do Terreno	Cotas do Projeto
225	1111.793	1111.506
226	1112.060	1111.618
227	1112.883	1112.793
228	1113.327	1111.551
229	1113.681	1112.073
230	1113.562	1112.407
231	1113.618	1112.392
232	1113.363	1112.345
233	1112.793	1112.146
234	1112.152	1111.602
235	1111.442	1111.067
236	1110.661	1110.226
237	1110.248	1109.879
238	1109.845	1109.615
239	1109.029	1108.799
240	1099.511	1099.281
250	1098.773	1098.543
251	1098.035	1097.805
252	1097.297	1096.673
253	1096.559	1096.077
254	1095.821	1095.262
255	1095.083	1094.746
256	1094.345	1093.835
257	1093.607	1093.036
258	1093.031	1092.426
259	1092.496	1091.763
260	1092.043	1091.301
261	1091.590	1090.839
262	1091.379	1090.512
263	1091.169	1090.486
264	1091.040	1090.528
265	1090.992	1090.501
266	1091.025	1090.604
267	1091.100	1090.415
268	1091.174	1089.607
269	1091.248	1087.846
270	1091.322	1088.625
271	1091.396	1088.684
272	1091.470	1087.212
273	1091.544	1085.055
274	1091.618	1083.292
275	1091.692	1086.518
276	1091.766	1088.886
277	1091.840	1090.182
278	1091.914	1091.474
279	1091.989	1091.686
280	1092.063	1091.745
281	1092.137	1091.820
282	1092.211	1091.930
283	1092.284	1092.148
284	1092.358	1092.104
284	1092.359	1092.129

Observações:	Elaboração:		Projeto:	G D F S T	DEPARTAMENTO DE ESTRADAS DE RODAGEM DO DISTRITO FEDERAL	
	Coord:		Cálculo:		RODOVIA : DF-150	Folha : PG-09
	Verif:		Projeto:		Desenho:	TRECHO: ENTR° DF-003 - ENTR° DF-205
		Arquivo:	Data:	Escala:	PROJETO GEOMÉTRICO ESTACA 225 À 237 / 249 À 284 - PISTA ESQUERDA	