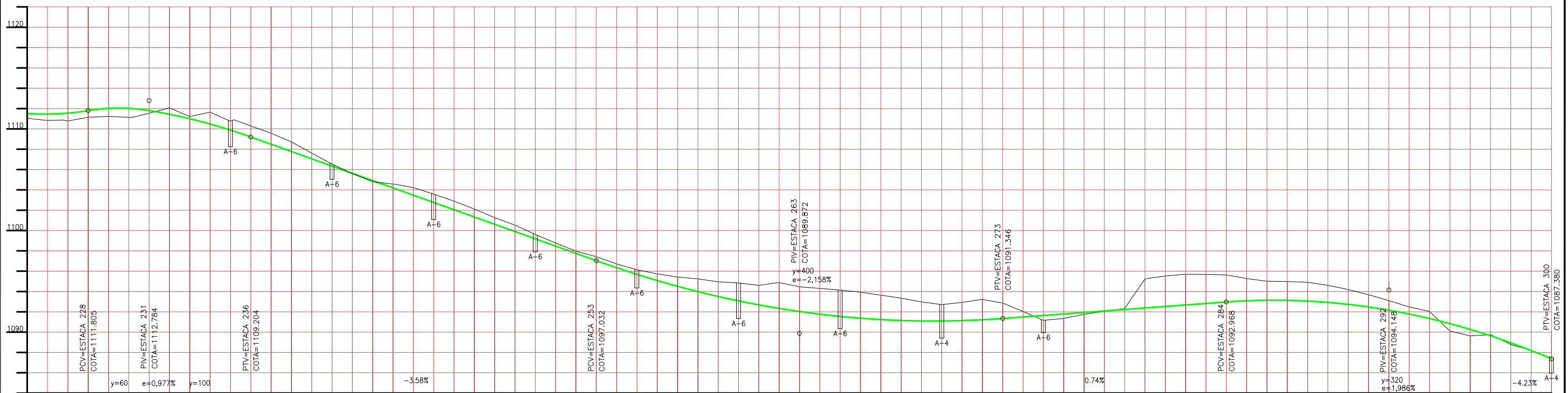


CURVA	AC°	R(m)	LC	T/TS(m)	D(m)	TS - PC	SC	CS	ST - PT
10-LD	32°12'04"	300.000	100.000	136.948	68.606	221+15,027	226+15,027	230+3,633	235+3,633
11-LD	8°08'24"	1694.000	—	120.535	240.665	243+0,265	—	—	255+0,930
12-LD	47°09'34"	847.000	—	369.688	697.155	255+0,930	—	—	289+18,085
13-LD	07°47'54"	1694.000	—	115.461	230.566	289+18,085	—	—	301+8,651



Estaca	Cota do Terreno	Cota da Estaca
225	1111.319	1111.038
226	1111.460	1110.825
227	1111.518	1110.988
228	1111.566	1110.978
229	1111.805	1111.144
230	1112.023	1111.236
231	1112.063	1111.135
232	1111.807	1111.542
233	1111.443	1112.066
234	1111.000	1111.207
235	1110.480	1111.653
236	1109.904	1110.884
237	1108.488	1109.573
238	1107.772	1108.722
239	1107.056	1107.623
240	1106.340	1106.539
241	1105.624	1105.592
242	1104.908	1104.801
243	1104.192	1104.574
244	1103.476	1104.221
245	1102.760	1103.581
246	1102.044	1102.886
247	1101.328	1102.118
248	1100.612	1101.269
249	1099.896	1100.534
250	1099.180	1099.611
251	1098.464	1098.766
252	1097.748	1097.968
253	1097.032	1097.426
254	1096.316	1096.715
255	1095.600	1096.134
256	1094.884	1095.734
257	1094.168	1095.424
258	1093.452	1095.241
259	1092.736	1094.950
260	1092.020	1094.834
261	1091.304	1094.603
262	1090.588	1094.884
263	1089.872	1094.455
264	1089.156	1094.303
265	1088.440	1094.143
266	1087.724	1093.930
267	1087.008	1093.641
268	1086.292	1093.345
269	1085.576	1092.985
270	1084.860	1092.708
271	1084.144	1092.933
272	1083.428	1093.230
273	1082.712	1092.864
274	1081.996	1092.032
275	1081.280	1091.158
276	1080.564	1091.357
277	1079.848	1091.753
278	1079.132	1092.059
279	1078.416	1092.328
280	1077.700	1092.539
281	1076.984	1092.556
282	1076.268	1092.702
283	1075.552	1092.821
284	1074.836	1092.632
285	1074.120	1092.278
286	1073.404	1092.013
287	1072.688	1091.976
288	1071.972	1091.889
289	1071.256	1091.600
290	1070.540	1091.288
291	1069.824	1090.976
292	1069.108	1090.625
293	1068.392	1090.275
294	1067.676	1089.924
295	1066.960	1089.574
296	1066.244	1089.224
297	1065.528	1088.874
298	1064.812	1088.524
299	1064.096	1088.174
300	1063.380	1087.824

Observações:

Elaboração:	STRATA Engenharia Ltda	Projeto:	G D F S T	DEPARTAMENTO DE ESTRADAS DE RODAGEM DO DISTRITO FEDERAL	
Coord:	Projeto:	Cálculo:	DER DF	RODOVIA : DF-150	Folha :
Verif:	Arquivo:	Desenho:		TRECHO: ENTR° DF-003 - ENTR° DF-205	PG-08
			Data:	EXTENSÃO : 13,5 km	
				Escala:	PROJETO GEOMÉTRICO ESTACA 225 À 300 - PISTA DIREITA